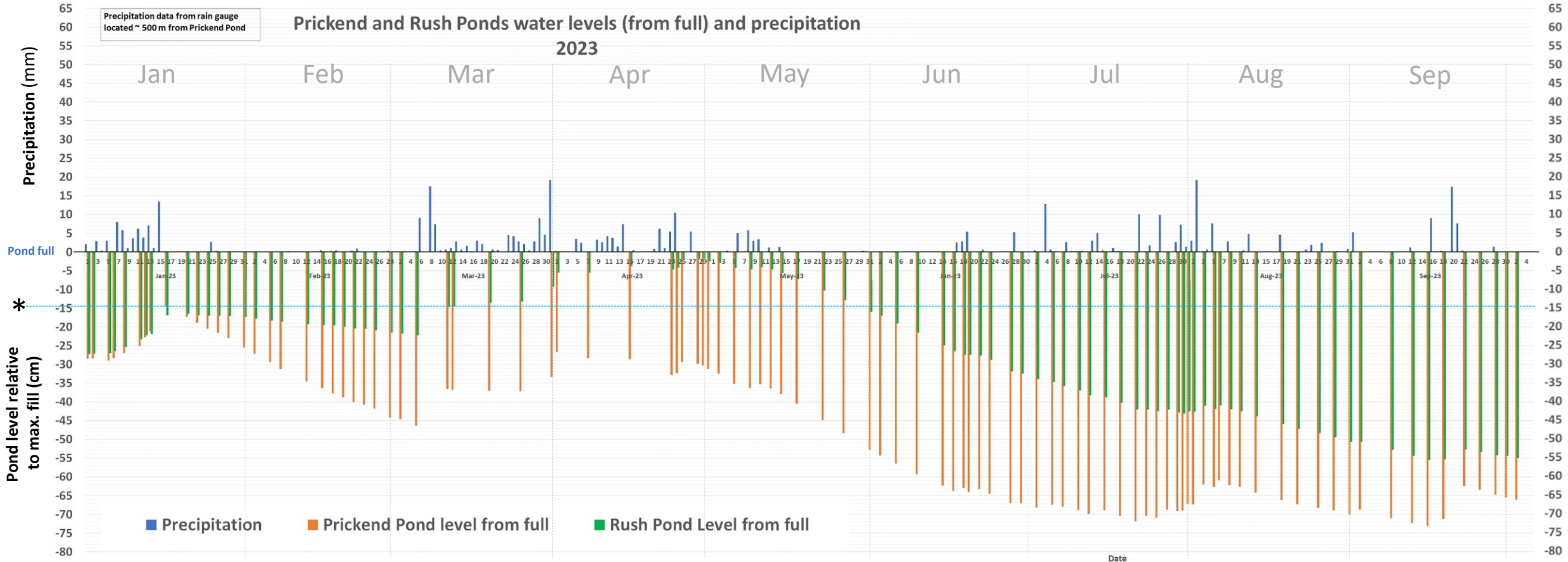
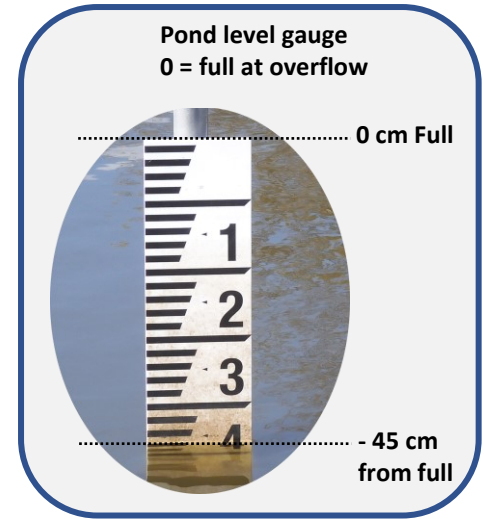




# Monitoring Pond levels



\* Prickend overflow height reduced (July 2020) to -14.5cm from pre 2020 max. level

# Prickend and Rush Pond water and precipitation levels 2020 - 2022



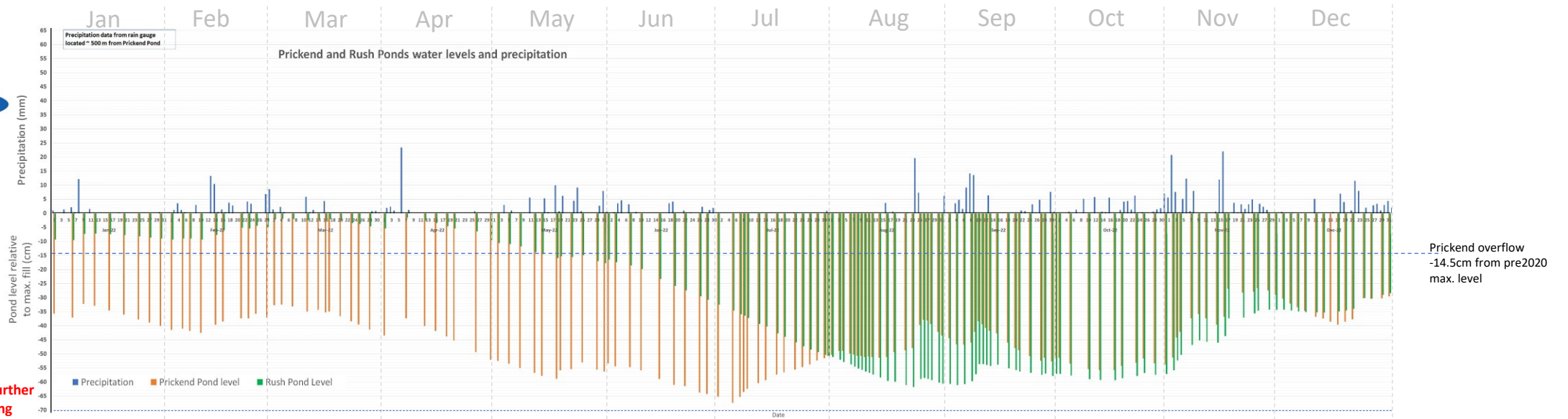
## 2022

Summer lows:

PP 5 Jul - 67 cm\*

RP 23 Aug - 62 cm

\*N.B. PP level prevented from dropping further by 50 days of a mains water leak feeding into pond

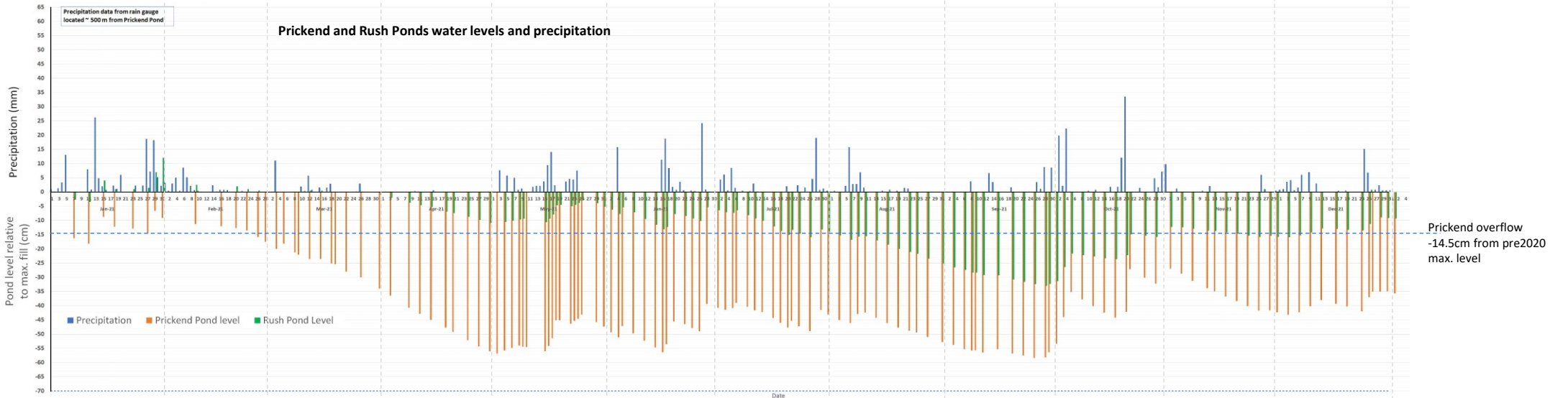


## 2021

Summer lows:

PP 28 Sep - 58 cm

RP 28 Sep - 33 cm



## 2020

Summer lows:

PP 16 Aug - 69 cm

RP 30 Sep - 49 cm

