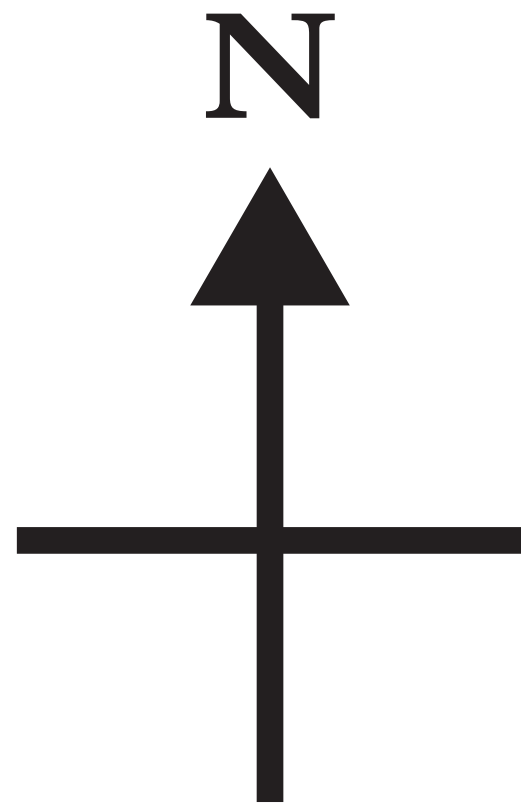
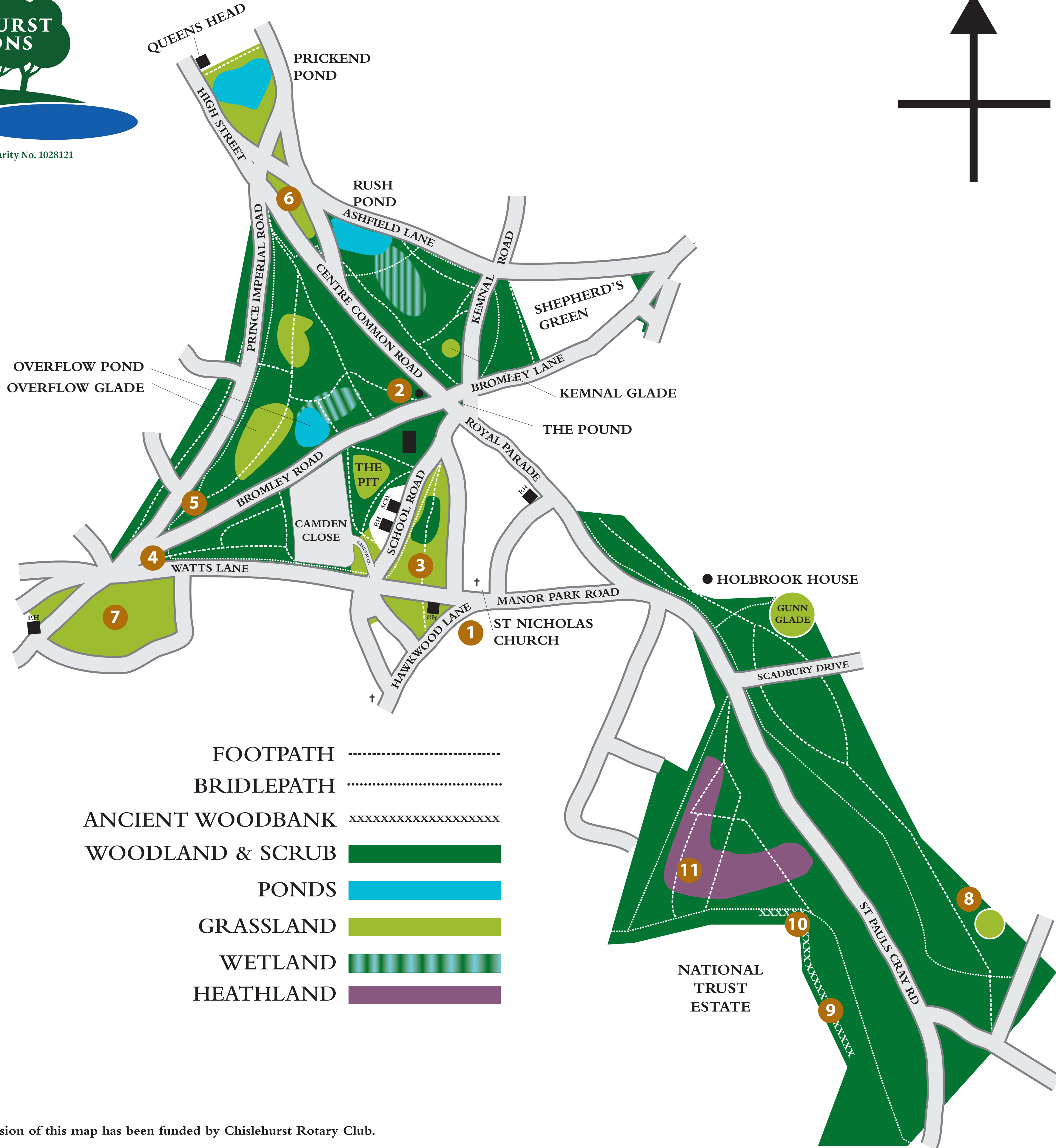


Chislehurst Commons



Registered Charity No. 1028121



PLACES OF INTEREST

1. **THE OLD FIRE STATION**, now the office of Chislehurst Commons.
2. **WAR MEMORIAL**, Erected after the First World War with donations from local people, and unveiled on October 20th 1920, it was designed by Sir Reginald Bloomfield, who also chose the site.
3. **THE COCKPIT**, which was used as a cock-fighting arena until the practice was outlawed in 1834.
4. **HANGMAN'S CORNER**, is the site on which a gibbet is thought to have stood.
5. **PRINCE IMPERIAL MONUMENT**, was erected by local subscription in 1880, commemorating Louis Napoleon, son of the exiled Emperor Napoleon III and Empress Eugenie, who lived at Camden Place, now the home of Chislehurst Golf Club.
6. **MAY QUEEN FIELD**, where the crowning of the May Queen has taken place on the first Saturday in May since 1923.
7. **THE CRICKET GROUND**, home to West Kent Cricket Club since 1822.
8. **DABNER'S GLADE**, A weather-boarded Kentish cottage, first a smithy, then a bakery, stood here until it was burnt down in 1937. The footpath follows the line of the old road to St. Mary Cray.
9. **THE WOODBANK**, with its line of pollarded oaks and parallel ditch, now marks the boundary between the Common and the adjacent National Trust land.
10. **THE WILLIAM WILLETT SUNDIAL (ON NT LAND)**, commemorates the local man who promoted the idea of British Summer Time.
11. **RESTORED HEATHLAND**, showing the appearance of much of the Commons until grazing stopped a century ago.

Chislehurst Commons, controlled by a board of 16 Trustees, has responsibility for managing the 180 acres of local common land under an Act of Parliament. The Metropolitan Commons (Chislehurst and St. Paul's Cray) Supplemental Act of 1888 protects the traditional right of individuals within the community to free and open access to the Commons, claimed and exercised for hundreds of years.

Historically the area was two Commons, Chislehurst Common and St. Paul's Cray Common, which were the common land of the local Manors.

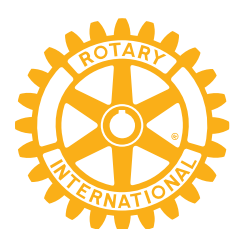
Under the Act, Chislehurst Commons has a duty to preserve the natural environment and prevent encroachments on the boundaries. Footpaths and ditches must be maintained, and all parts of the Commons must be accessible at all times.

There are bye-laws which set out rules for the use of the Commons, of which 2 are: -
 Horse-riding is only permitted on bridle paths marked by blue and white flashes on trees.
 Dogs must be kept under control and away from bridle paths.

The Commons contain valuable habitats that support a range of wildlife. There are two paid Keepers who carry out the varied work of maintaining the woodland, grassland, heathland, ponds and wetlands. An important part of this is encouraging bio-diversity by creating and enhancing habitats.

In recent years our annual costs to maintain the Commons have been met as to one third from the London Borough of Bromley. To meet the balance, we are mainly reliant upon the generosity of local people and organisations.

Chislehurst Commons has charity status.



The provision of this map has been funded by Chislehurst Rotary Club.